

2022 Annual Report

New Philadelphia Municipal Court

Memorial Municipal Building
166 East High Avenue
New Philadelphia, Ohio 44663



Prepared & Submitted by:
Judge Nanette DeGarmo Von Allman

February 13, 2023

Honorable Joel Day, Mayor of New Philadelphia
New Philadelphia City Council
Tuscarawas County Commissioners

Re: New Philadelphia Municipal Court 2022 Annual Report

Dear Madams and Sirs:

It has been my privilege and honor to have served my eleventh year as Judge of the New Philadelphia Municipal Court. We were able to return to pre-COVID operations in early 2022. We retained the capacity to utilize technology for efficient court operations.

Our communities, and the New Philadelphia Municipal Court, continue to face many challenges in dealing with crime directly related to substance abuse and mental health issues.

We continue to utilize programming to improve outcomes for individuals in the court system. The New Philadelphia Municipal Recovery Court (substance abuse), and Pre-Trial Supervision programs provide effective monitoring through our Probation Department, in collaboration with local law enforcement and mental health and addiction treatment agencies.

New in 2022

In 2022, the court handled a total of **8,747** cases, a decrease of 5.17% from the 9,224 cases handled in 2021.

Judge Von Allman presents twice a year for law enforcement and other justice partners on the topic of Competence to Stand Trial and Not Guilty by Reason of Insanity at the Tuscarawas County Crisis Intervention Training (CIT). She also presented at a continuing legal education training to the Tuscarawas Bar Association on “Medical Marijuana and the Courts.”

The Court undertook a comprehensive project of drafting, organizing, and compiling **Local Rules of Practice** for the Municipal Court. The Court also developed and posted resources for landlords and tenants and adopted a Language Access Plan and Court Technology Plan as recommended by the Supreme Court of Ohio. All are available on the Court’s website at **www.npmunicipalcourt.org**.

Using Court funds, the Court purchased a vehicle for Court use, but especially for our probation officers to utilize. The car is equipped with a partition wall and an in-car radio which allows the probation staff to communicate with local law enforcement agencies while working in the field. This allows officers to conduct home visits, custodial and non-custodial transports, and other field work.

General Operations in 2022

In 2022, the Court remitted **\$1,407,892.27** to the city and county: **\$1,274,124.46** to the City of New Philadelphia, including special court funds, and **\$133,767.81** to Tuscarawas County, including Law Library and Public Defender fees.

The Court's records are available online at www.npmunicipalcourt.org. Visitors to the website can search open and closed case information, view the daily schedule, obtain information about the Court's operations, and pay financial sanctions on-line. In 2022, there were **265,142** users with **215,998** page views. In 2019, the Court added an "Active Warrants" page, which allows users to search outstanding active warrants. The website has been upgraded to make it mobile-friendly. All computer upgrades and maintenance are paid for with funds generated from court costs.

Judge Von Allman and Judge Gary Willen of the Carroll County Municipal Court have, for the last 11 years, had an on-going reciprocal assignment agreement authorized by the Supreme Court of Ohio. Judge Von Allman and Judge Willen cover each other's dockets, on average of one day per month, at no cost, thus reducing Visiting Judge costs to both courts.

The Court partnered with Tuscarawas County Community Corrections and OhioAMS (Alcohol Monitoring Service) to provide grant supported enhanced drug testing services to probationers and program participants. Employees of OhioAMS conduct the drug screens and report results remotely to staff. In 2022, **3,599** urine drug screens were administered compared to **2,589** in 2021.

Court staff, including Judge VonAllman, Magistrates Weimer and Dailey, Court Administration, Bailiff/Security staff, Probation staff and Clerk staff obtained over **340 hours** of training/continuing education. Most of the continuing education is provided by the Supreme Court of Ohio Judicial College at little or no cost or is available on-line. Professional association conferences were also attended.

In 2019, the Court created the Municipal Court Work Program in partnership with the New Philadelphia Service Director's Office and the New Philadelphia Business and Community Association. Non-violent defendants can be sentenced to the program in lieu of jail days to perform general clean-up and seasonal tasks in the New Philadelphia downtown area, as well as Tuscora Park and other public facilities owned or maintained by the city. **In 2022, 127 defendants were ordered to serve a total of 676 days on the work program an increase of 106% over the previous year. If those days had been served in the county jail, the cost to the taxpayers would have been \$40,560.00.**

The New Philadelphia Municipal Recovery Court was re-certified by the Supreme Court of Ohio through the end of 2023. The Court receives a payroll subsidy through the Ohio Department of Mental Health and Addiction Services for program administrative costs.

The Court uses a grant-funded Pretrial Supervision program to closely supervise certain defendants while they await trial. In 2022, **389** screenings were conducted, and **299** defendants

were referred to Pretrial Supervision, an increase of 50% from the previous year. 97% of defendants in the Pretrial Program successfully completed supervision.

Municipal Court employees continued “**Casual Fridays for Charity.**” Staff who desire to dress casually on Fridays contribute \$2.00 each. Each month, a different charity is chosen by the staff. **In 2022, employees raised over \$800.00** which was distributed among various charities including: Akron-Canton Regional Foodbank, Friends of the Homeless, Salvation Army, Tusc. Rainbow Connection, Tuscarawas County Humane Society, Mobil Meals, Starlight Enterprises, and FOP Lodge 4 Shop with a Cop.

In closing, I wish to acknowledge the dedication and hard work of my entire staff. I would also like to thank all of you for your cooperation and support. I look forward to working together in the months and years ahead to make our community a better place for everyone.

Sincerely yours,

Judge Nanette DeGarmo Von Allman

The New Philadelphia Municipal Court

Clerk of Court Report

Territorial Jurisdiction

The New Philadelphia Municipal Court has territorial jurisdiction within the municipal corporations of New Philadelphia and Dover, and within Wayne, Franklin, Lawrence, Sandy, Sugarcreek, Dover, Fairfield, Warren, Auburn, York, Goshen, Bucks, and Jefferson Townships in Tuscarawas County.

Subject Matter Jurisdiction

Criminal Division:

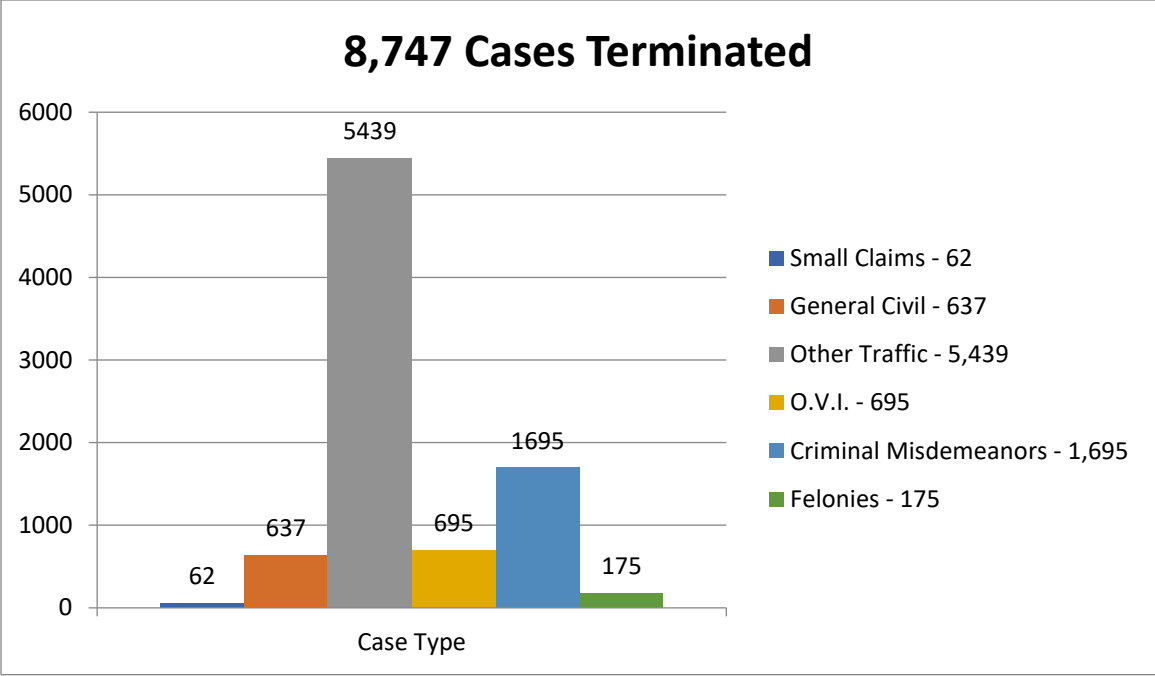
The Court has jurisdiction over violations of any ordinance of any municipal corporation within its territory, and of any misdemeanor committed within the limits of its territory. The Municipal Court also has jurisdiction to conduct preliminary hearings and other necessary hearings in felony offenses committed within its jurisdiction in order to determine if there is probable cause to hold or recognize the defendant to appear before the Court of Common Pleas.

Civil Division:

The Court has jurisdiction in civil matters in all cases in which the amount claimed by any party, or the appraised value of the personal property sought to be recovered, is less than fifteen thousand dollars (\$15,000.00). The Court also hears civil appeals of various orders of the Ohio Bureau of Motor Vehicles, eviction actions and other landlord/tenant disputes, and Small Claims cases where the amount in controversy does not exceed six thousand dollars (\$6,000.00).

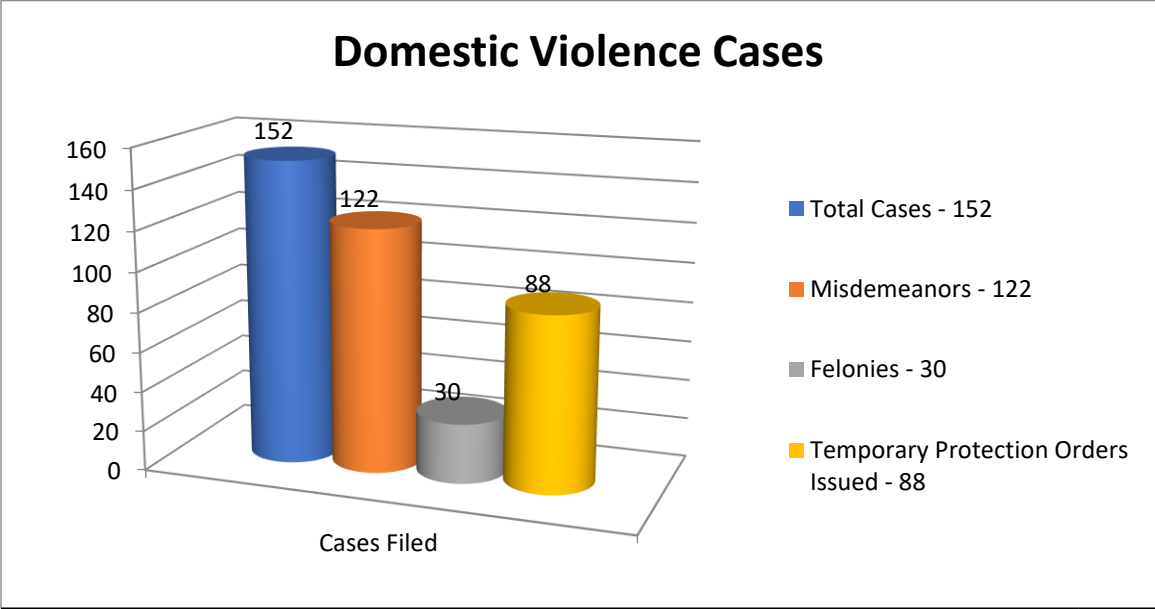
Cases Handled and Terminated in 2022

The New Philadelphia Municipal Court handled **8,747 cases in 2022**. It should be noted that this figure does not include the number of cases that are reopened each year due to motions to revoke community control sanctions, motions for contempt of court due to failure to comply with court orders, and the collection of civil judgments through garnishments, attachments, and debtors exams.



Trials

In 2022, the Court held **454** bench trials, and **62** Small Claims trials.



Dispute Resolution in Criminal Tax Cases/Bad Check Cases

In 2022, **45** city income tax charges were filed. Many of these cases were referred to the program resulting in successful resolution. The Court also utilizes the program to resolve bad check cases.

CILOCS

Contributions in Lieu of Community Service: Pursuant to a change in Ohio law in 2011, the Court may permit a defendant who is sentenced to a term of community service to make a reasonable contribution, instead of working the service hours, to the General Fund of the County, Municipality, or other local entity that provides funding to the Court. If more than one entity provides funding, the contribution is disbursed in proportion to the amount of funding provided. We call this program CILOCS.

In 2022, a total of **\$131,669.78** in CILOCS funds were received. Recognizing the expanding responsibilities in delivering court services in probation, declining revenue in the Probation fund, physical needs of the 71-year-old Municipal building, and the work involved in administering the CILOCS program, the New Philadelphia City Council passed a Resolution in 2016 to designate the CILOCS funds for the Court's exclusive use. The Resolution was amended in 2018 to provide the City of New Philadelphia a 20% contribution to the Victims of Crime Grant for the Victim's Advocate if necessary.

Payment Plans

Defendants who request additional time to pay fines and court costs are assessed a \$25.00 payment plan fee. Offenders who owe the court money may be granted time to pay, after which the delinquent balance is forwarded to the Court's collection agencies.

Collections

The Court follows all state, federal and constitutional guidelines in assessing and collecting fines, costs and fees and determining each defendant's ability to pay. Defendants are advised in writing of their rights and the Court's procedures regarding the imposition and collection of financial sanctions.

By adopting a local rule in 2013, the Court modified how payments made by defendants are applied. Payments are applied first to local court costs, then to reimbursements, then to restitution, and then to fines.

In 2012, the Clerk of Court entered into a contract with **Capital Recovery Systems** to refer, at the Court's discretion, certain cases for collection. This service is at no cost to the Court and resulted in the collection of **\$13,050.32** in 2022 for fines and costs that may have otherwise gone uncollected. Since inception, Capital Recovery Systems has collected **\$618,719.25** for the Court.

In December 2017, the Court entered into a Delinquent Debt Collection Agreement with the **Ohio Attorney General's Office** as an additional means of collecting funds owed to the Court. This service is also at no cost to the Court. The Attorney General's Office collected **\$170,336.56** in fines, fees and restitution in 2021. Since inception, the Ohio Attorney General's Office has collected **\$864,137.74** for the Court.

Court Receipts and Disbursements

Receipts for the Court totaled **\$1,853,712.70 in 2022** compared to **\$1,770,439.32 in 2021**, an increase of 4.7%. This amount excludes the balance on hand as of January 1, 2022.

Receipts of the Criminal and Traffic Division totaled **\$1,347,397.73**. This represents fines, court costs, interest, bonds, and fees.

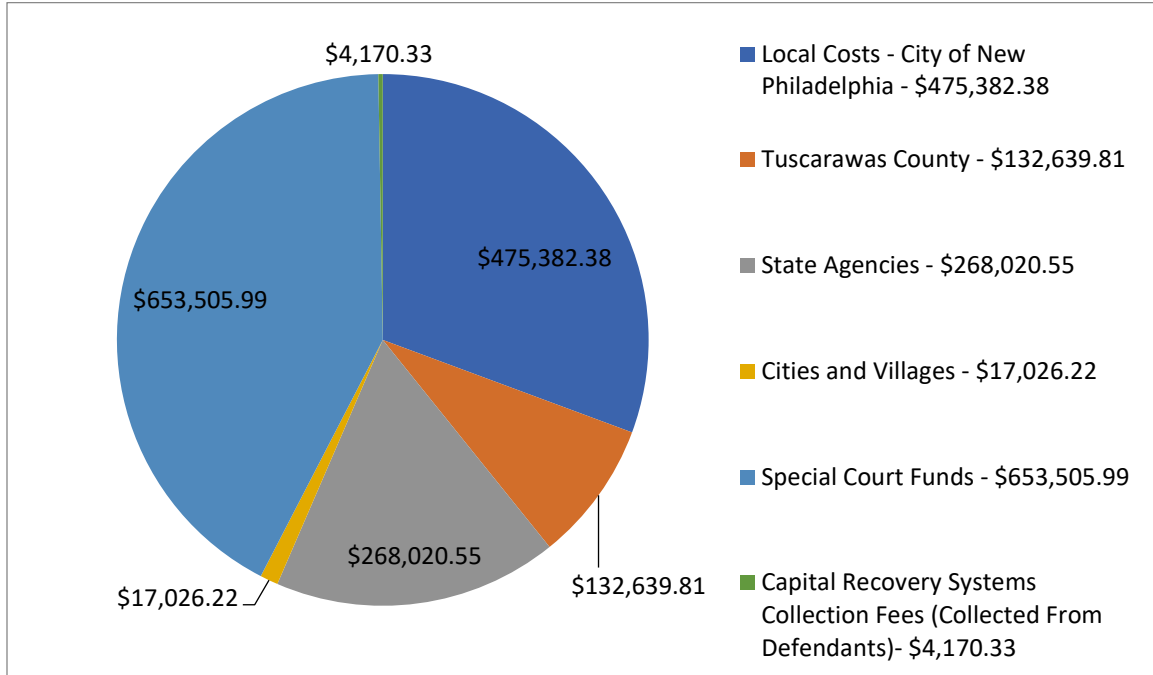
Receipts of the Civil Division totaled **\$506,314.97**. Civil receipts include filing fees, deposits for other costs, bonds, garnishments, judgments paid, and interest.

In 2022, the Court remitted **\$1,407,892.27** to the city and county: **\$1,274,124.46** to the City of New Philadelphia, including special court funds, and **\$133,767.81** to Tuscarawas County, including the Law Library and Public Defender fee.

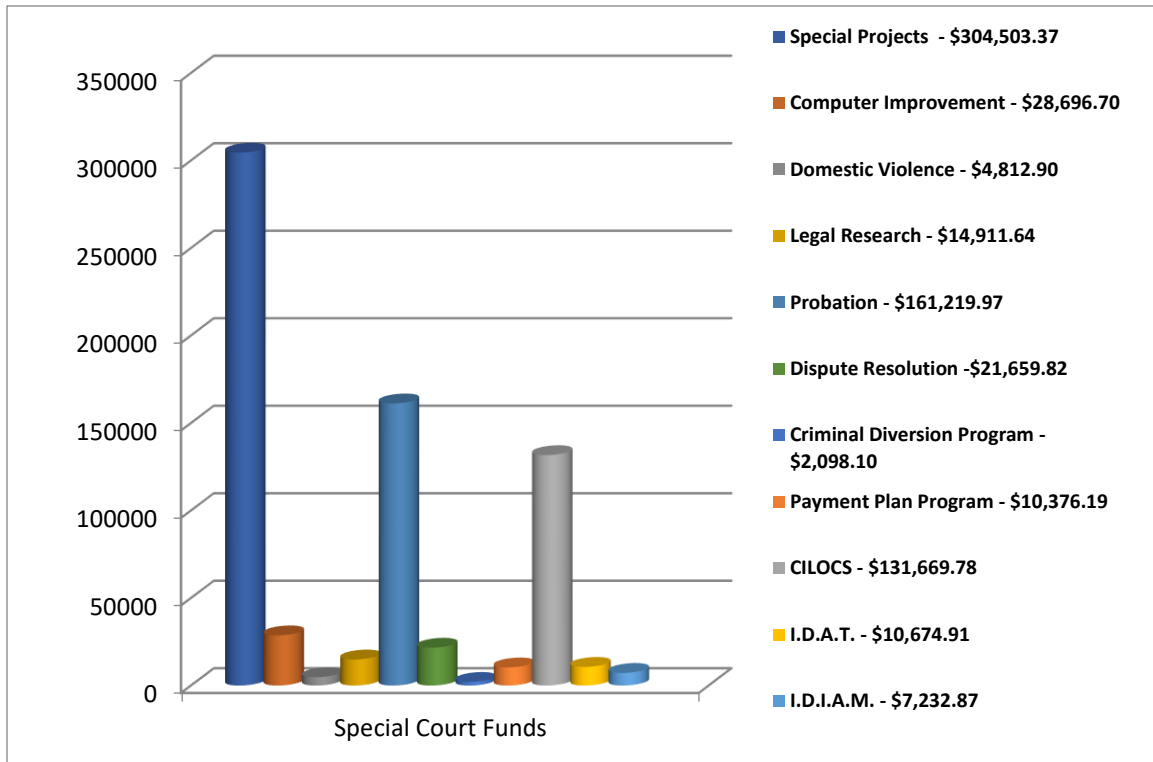
The Court's criminal and traffic disbursements are divided among the various political subdivisions included within the territory of the Court. Civil disbursements are divided pursuant to statute.

A complete balance sheet is attached as an appendix to this report.

2022 Traffic and Criminal Disbursements:

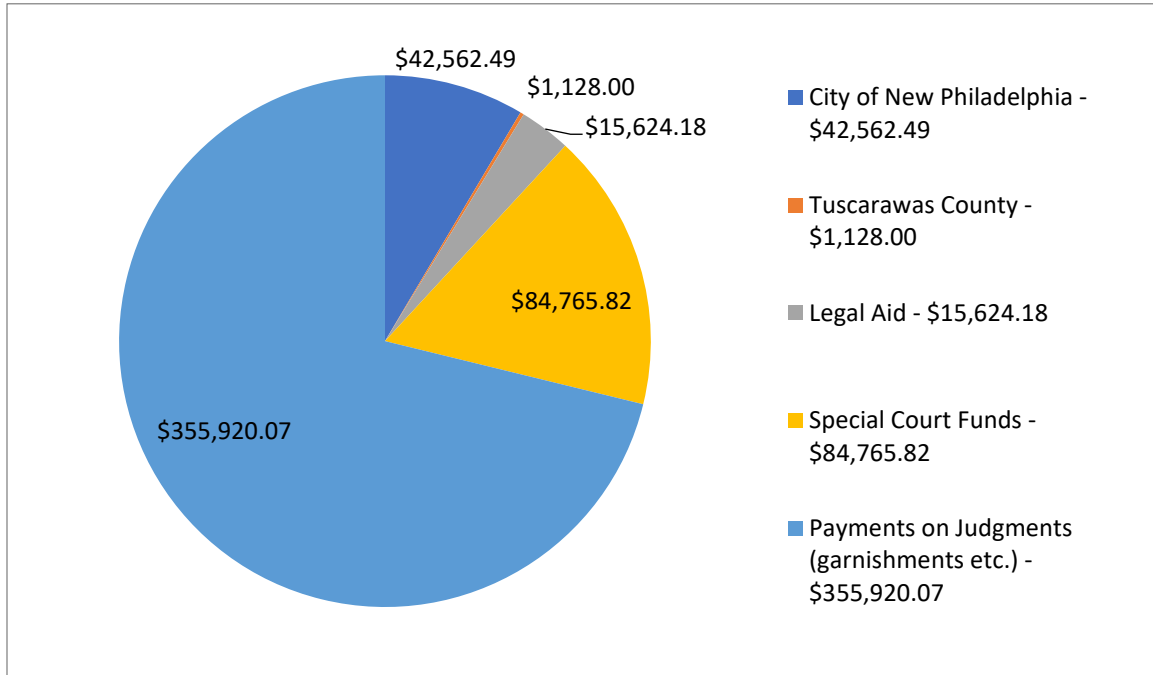


2022 Traffic and Criminal Special Court Funds Disbursements - \$671,413.77:

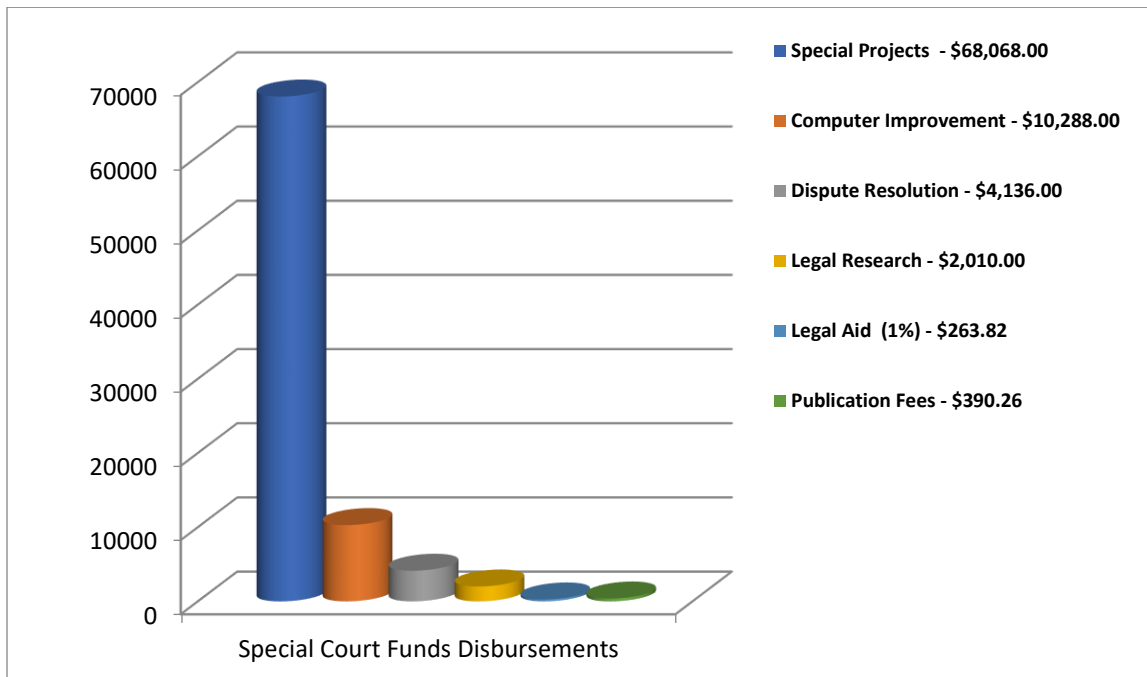


2022 Civil and Small Claims Disbursements:

Some of the funds received and disbursed by the Court are held by the Court temporarily for others. For example, wage garnishments received on behalf of a creditor. For this reason, the bank accounts of the Court will always reflect a balance on hand amount.



2022 Civil and Small Claims Special Court Funds Disbursements - \$85,156.08
THESE FUNDS ARE RECEIVED FROM COURT COSTS



Specific Funds

Computer Fund

Current legislation allows the Court to collect additional court costs that are deposited into specific funds for the computerization of the Court. This money can be used to purchase and maintain computer systems for the clerk’s office. The money can also be used to provide computerized legal research for the Court. All computer paper, supplies, and a portion of salaries/benefits for computer staff can be purchased or paid for through this fund.

Probation Fund

A monthly probation supervision fee is assessed to all defendants admitted to a term of probation. These fees are then deposited into the Probation Fund. This fund is used to provide necessary equipment and pay expenses for the Probation Department, including salaries.

Special Projects Fund

The purpose of this fund is to acquire and pay for special projects of the Court including, but not limited to, the acquisition of additional facilities or the rehabilitation of existing facilities, the acquisition of equipment, the hiring and training of staff, mediation or dispute resolution services, the employment of magistrates, the training and education of the judge, acting judges, and magistrates, and other related services. The Court, by local rule, charges a Special Project fee on the filing of each criminal case, civil action or proceeding, or judgment by confession.

Domestic Violence Fund

If a municipal court offers a special program or service in cases of a specific type, the municipal court by rule may assess an additional charge in a case of that type, over and above court costs, to cover the special program or service. The New Philadelphia Municipal Court has created a Domestic Violence Fund from a fee assessed on all domestic violence filings. This fund is utilized primarily to pay for staff training on domestic violence topics.

Dispute Resolution Fund

The Court operates a Dispute Settlement Program to resolve certain cases without a trial. Income tax and bad check cases may proceed through the Dispute Settlement Program. The purpose of establishing the Dispute Resolution Fund is to cover the cost of the program including personnel costs.

Criminal Diversion Program Fund

The Criminal Diversion Program Fund was created in conjunction with the Criminal Diversion Program (CDP). Eligible defendants pay a diversion program fee which is used, in part, to meet personnel and other costs related to administration of the program.

Payment Plan Fund

By local rule, the Court created a Payment Plan Program to promote payment compliance. Criminal or traffic offenders may delay payment of fines and costs up to 30 days or enter into a payment plan. The fee to participate is used to defray the costs of the program.

Indigent Drivers Alcohol Treatment Fund (I.D.A.T.)

Pursuant to state law, when individuals are charged with or convicted of operating a vehicle under the influence of drugs or alcohol (O.V.I.), or for refusing a breath test, their driver's license is suspended for a period of time. After the suspension is over, they must pay a \$475.00 reinstatement fee to the Bureau of Motor Vehicles. A portion of the reinstatement fee is directed to the I.D.A.T. fund administered by the Ohio Department of Alcohol and Addiction Services. In addition, H.B. 562, in July of 2009, imposed a \$10.00 court cost on all moving violations. \$1.50 of these increased costs also goes into this fund. On our balance sheet, this includes funds listed as "I.A.T.C."

By law, the municipal court is required to have an I.D.A.T. fund. These funds are used to pay for the cost of alcohol and/or drug addiction treatment if a defendant is ordered into treatment and cannot afford to pay the cost of attending the program. In 2005, the state legislature amended the I.D.A.T. statute to allow courts to utilize these funds to pay for alcohol monitoring anklets for defendants in treatment. **In 2022, these funds were used for treatment and/or anklets for 7 indigent O.V.I defendants.**

Indigent Drivers Interlock and Alcohol Monitoring Fund (I.D.I.A.M.)

A state law which became effective in September of 2008 increased mandatory O.V.I. fines by \$50.00. In addition, license reinstatement fees were increased by \$50.00. These fines and fees are deposited into this fund which the court was required to establish. These funds are to be used exclusively to cover the cost of immobilizing or disabling devices, including ignition interlock devices and alcohol monitoring devices for indigent OVI offenders as ordered by a judge. A surplus can be declared in the fund and transferred to the I.D.A.T. fund. **In 2022, 14 indigent OVI defendants received assistance to pay the cost of alcohol monitoring devices or ignition interlock devices using this fund.**

Contributions in Lieu of Community Service Fund (CILOCS)

In 2011, Ohio Revised Code Section 2929.27(B) was enacted as part of Substitute House Bill 5 which deals with sentencing in criminal and traffic cases. It allows an offender who has been sentenced to a term of community service to request that the court modify the sentence to authorize the offender to make a reasonable contribution in lieu of community service. These CILOC funds, by statute, are required to be deposited in the general funds of the Court's funding authorities, which are the City of New Philadelphia and Tuscarawas County. On March 28, 2016, New Philadelphia City Council enacted Resolution 14-2016 for the purpose of supporting, in part, the City's obligations under O.R.C. 1901.36 to provide the Court with suitable facilities and to assist the Court with increased probation supervision costs associated with local increase in drug addiction and related criminal activity. The Resolution directed that funds collected under O.R.C. 2929.27(B) be deposited into the CILOCS fund, for the Court's exclusive use as needed. Since inception, the Court has used the funds for a variety of purposes including Probation Department funding, building improvements, and enhanced drug testing services. The Resolution was amended in 2018 to provide the City of New Philadelphia a 20% contribution to the Victims of Crime Grant for the Victim's Advocate if necessary.

Probation Department Report

The Probation Department is staffed by Chief Probation Officer **Leslie Miller**, Probation Officers **Wendy Jones, Mindy Craig, and Brian Mathews**.

Probation Officers meet regularly with defendants on their assigned caseloads to ensure that all court orders are followed. Defendants on Community Control Sanctions are sentenced to a term of incarceration in the county jail. All or part of the jail sentence may be suspended and the defendant is then placed on Community Control Sanctions. All defendants are required to be law abiding (no new criminal or serious traffic offenses) and to pay all financial sanctions including probation fees. Other terms of Community Control Sanctions will include, depending on the particular offense, to be drug and alcohol free and submit to regular, random drug and alcohol testing; complete substance abuse, anger or mental health counseling; pay restitution to victims; complete an OVI Driver's Intervention Program; and, complete on the Municipal Court Work Program, or Inmate Work Program. Probation terms vary in both duration and conditions. The majority of probationers are supervised for a year or more.

The Probation Department is also responsible for conducting and preparing pre-sentence investigation reports for defendants awaiting sentencing.

The Probation Department also provides programming and supervision for defendants placed on Pretrial Supervision, Criminal Diversion, the New Philadelphia Municipal Recovery Court, and the Choices Program. In addition, Probation Officers monitor cases in which defendants are not placed on a term of probation but who are required to serve jail, perform community service, or complete the Municipal Court Work Program, Inmate Work Program or Driver's Intervention Program.

The Probation Officers obtained over **100** hours of continuing education hours in 2022. Trainings included co-occurring mental health and substance abuse disorders, street drugs, behavior management and diversity.

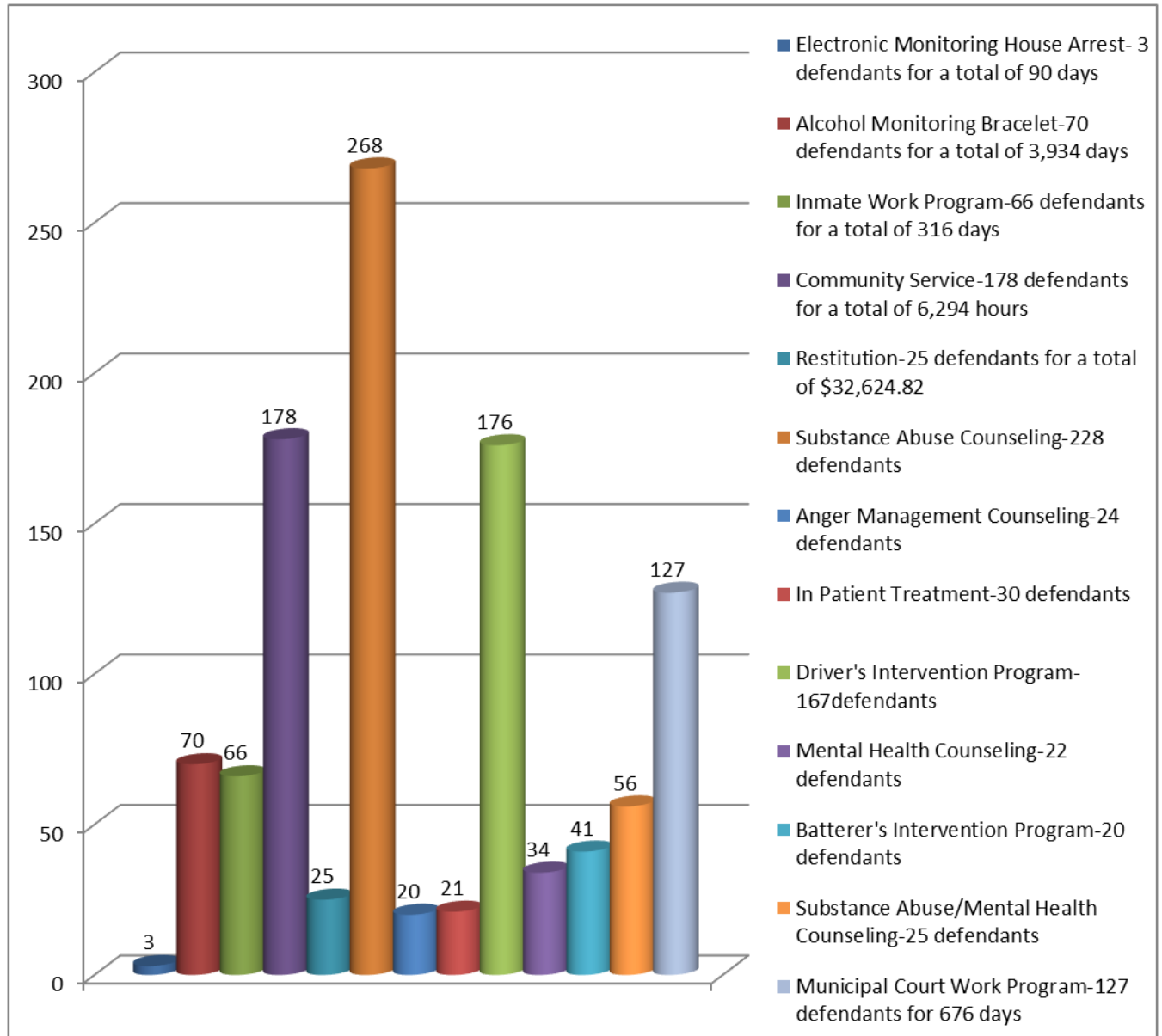
The Probation Department obtained a new vehicle in April 2022. The car is equipped with a partition wall and an in-car radio which allows the probation staff to have access to communicate with local law enforcement agencies while working in the field.

Chief Probation Officer Leslie Miller has assigned Probation Officer Wendy Jones as the Primary Field Officer. Officer Jones oversees all field work done by officers, as well as custodial and non-custodial transports. The Probation Department has utilized the vehicle to drive to trainings, transport offenders to jail, perform home visits and meet with offenders at residential treatment facilities.

Probation Statistics:

The Probation Department added **415** defendants to be monitored on Community Control Sanctions in 2022. On January 1, 2022, the probation department supervised **511** active individuals. On December 31, 2022, there were **564** individuals on active supervision.

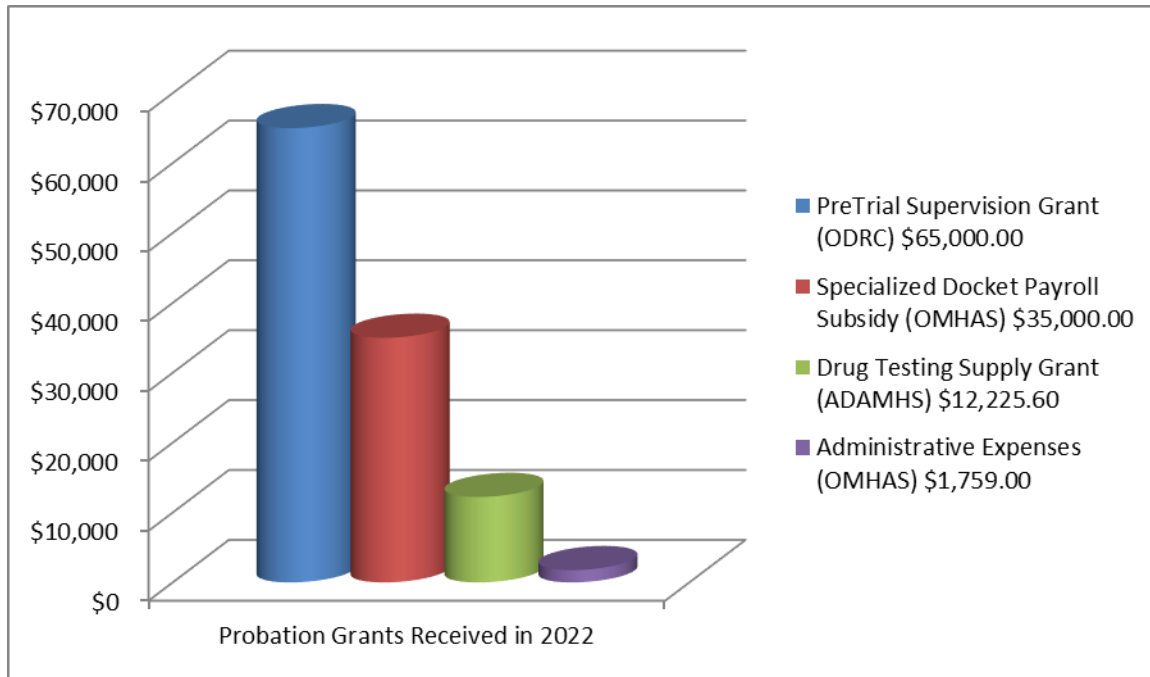
The following chart outlines the number of defendants ordered to special programs through the probation department in 2022:



Drug Screens:

The Court continues to partner with Tuscarawas County Community Corrections and OhioAMS to provide enhanced drug testing services. Included in this partnership is a random daily telephone call-in service. Defendants who are subject to random drug testing must call in daily to see if they have been selected to test and must appear to test that same day within a short time frame. In 2022, **3,599** urine and oral fluid drug tests were administered between the probation office and OhioAMS testing office.

\$113,984.60 was received in Probation Grants:



New Philadelphia Municipal Recovery Court:

The New Philadelphia Municipal Recovery Court was established and originally certified by the Ohio Supreme Court Commission on Specialized Docket in September 2015. The program received recertification on November 18, 2020, valid through December 31, 2023. The Recovery Court focuses on defendants who have been charged with a misdemeanor offense directly or indirectly related to, or resulting from, substance dependence.

The Recovery Court program is designed to hold individuals accountable to their families and society, restore families, enhance public safety by reducing criminal and drug related activity, reduce jail and law enforcement costs to the taxpayers, and provide an opportunity for drug dependent individuals to become sober, positive, and contributing members of our community. The program incorporates medication assisted treatment, inpatient or intensive outpatient therapies, sober support groups including AA/NA, mentor and peer support, community

involvement and other best practices for addiction treatment as approved and adopted by the National Association of Drug Court Professionals.

As a result of obtaining Specialized Docket Certification, the Court was also able to apply for and receive a grant from the Ohio Department of Mental Health and Addiction Services in the amount of **\$65,000.00** over two years to offset payroll costs of our Chief Probation Officer, who is also our Specialized Docket Coordinator.

In 2022, **7** individuals were referred to The New Philadelphia Municipal Recovery Court. **Four** participants successfully graduated, and none were terminated as unsuccessful. As of December 31, 2022, there were **12** active participants.

Thirty-one individuals have successfully graduated from the program since inception. Of those, **69%** have not had a new criminal or alcohol/drug related offense within two years of graduation.

Addiction Treatment Program (ATP) Recovery Supports and Treatment Services funds through an Ohio Department of Mental Health and Addiction Services grant, administered by the ADAMHS Board of Tuscarawas and Carroll Counties, were used to improve treatment services for program recipients. The Court received an additional **\$1,759.00** in 2022 in Addiction Treatment Program (ATP) Recovery Supports and Treatment Services funds to help cover administrative expenses of the specialized docket.

The Court also received a grant in the amount of **\$12,225.60** from the ADAMHS Board to offset the cost of drug testing supplies for those participating in Recovery Court and other probationers who are enrolled in the ADAHMS Board system of care.

In December 2021, the Court, along with The Tuscarawas County Common Pleas Court, partnered with Opportunities for Ohioans with Disabilities (OOD) to provide the Jobs for Recovery Program. OOD Jobs for Recovery provides employment assistance to individuals with substance use disorders and/or mental health disabilities. The courts received two full-time, dedicated, OOD staff who worked alongside the courts' treatment providers for the specialized dockets and probation departments. These staff members attended treatment team meetings and court proceedings to ensure rapid engagement of each participant in career counseling, job placement, and retention services. They also helped address employment barriers, such as transportation and work clothes.

In 2022, **23** participants from the were enrolled with OOD for employment services. Three participants successfully completed the program, while 17 continue to receive services.

Pretrial Supervision Program:

The Court has utilized Pretrial Supervision to closely supervise certain defendants while they await trial. In 2022, **389** screenings were conducted, and **299** defendants were referred to Pretrial Supervision.

To increase pretrial supervision services and further reduce incarceration costs, the Court, beginning in 2016, applied for and received a grant through the Ohio Department of Rehabilitation

and Corrections, Bureau of Community Sanctions. The Court received a renewal for 2 years in 2021, receiving \$65,000.00 in 2021 and \$65,000.00 in 2022. The grant was used to hire an additional Probation officer and to pay for electronic monitoring of defendants. In 2022, **4** defendants wore GPS location anklets for a total of **242** days and **38** defendants wore alcohol monitoring anklets for a total of **706** days.

Personal and Family Counseling Services, an Ohio Guidestone provider, renewed a grant called P.R.O.P.S. (Pre-Release Outreach and Personal Support), which assigns a case-manager to the New Philadelphia Municipal Court to provide case-management services to those in the Pretrial Supervision Program. The P.R.O.P.S. program began in October 2017. In 2022, 231 individuals on pretrial supervision received case management services and were scheduled for mental health and/or substance abuse services within 3 days of release from jail. 81.5% of those individuals remain compliant with treatment and supervision. This is a vital service which has contributed to the success of the Pretrial Supervision Program.

In 2022, **97%** of defendants in the Pretrial Program successfully completed supervision.

Criminal Diversion Program:

The Court continues the Criminal Diversion Program (CDP) for certain first-time offenders. In 2022, **8** first time offenders entered the program and **7** successfully completed the program. One participant's case was still pending at the end of 2022. There were no participants terminated unsuccessfully from the program in 2022.

Non-Probation Community Service:

Some non-violent offenders are not required to serve a term of probation but are given community service as part of their sentence. Leslie Miller, Chief Probation Officer, also serves as the compliance officer for these offenders. In 2022, **358** defendants were ordered to complete **9,576** hours of community service.

Inmate Work Program:

Sixty-six defendants were assigned to serve **316** days on the Inmate Work Program in lieu of jail. This number includes defendants on probation and not ordered to probation supervision. This program results in lower inmate housing costs at the jail and the collection of a significant amount of trash and recyclables from our highways. **At an average cost of \$60.00 per day, the cost to the Tuscarawas County taxpayers would have been \$18,960.00 if those defendants had served jail.**

Municipal Court Work Program:

In April 2019, the Court created the Municipal Court Work Program in partnership with the New Philadelphia Service Director's Office and the New Philadelphia Business and Community Association. Non-violent defendants can be sentenced to the program in lieu of jail days to perform general clean-up and seasonal tasks in the New Philadelphia downtown area, as well as

Tuscora Park and other public facilities owned or maintained by the City. The Court continued the program during the pandemic as most work was outdoors, and participants adhered to hygiene and social distancing policies. In 2022, **127** defendants were ordered to serve a total of **676** days on the work program. **If those days had been served in jail, the cost to the Tuscarawas County taxpayers would have been \$40,560.00.**

Court Security/Bailiffs

Matt Henry is the Chief Bailiff/Chief Court Security Officer. He is assisted by Bailiffs **Joe Reiger, Rick McCoy, and part-time/substitute bailiffs Dave Scott, Terry Warner and Bob Copple**. The bailiffs assist in the courtrooms, serve subpoenas and other process (including evictions), and provide security throughout the building. All of our bailiffs are former or current law enforcement officers and maintain their annual firearm certification qualifications through the New Philadelphia Police Department.

Process Serving Data 2022:

Month	Income Tax	Notice Hearings	Evictions	Subpoenas	Debtor Exams	Writs	Misc.	Fail serves
Jan.	1	0	19	118	0	2	1	12
Feb.	0	0	17	88	0	0	1	4
March	0	0	21	109	0	4	2	6
April	0	0	17	46	0	7	3	7
May	0	2	21	110	0	4	2	3
June	0	1	17	160	2	3	2	11
July	1	3	10	88	0	3	7	4
Aug.	1	0	17	145	0	2	3	9
Sept.	0	2	17	130	0	4	8	11
Oct.	0	4	22	135	0	5	5	11
Nov.	1	1	15	79	0	0	2	2
Dec.	2	0	20	131	0	4	1	1
Total	6	13	213	1339	2	38	37	81 x 3 =243*

* Fail serve number of 81 is actually 243 as each attempt was made three times.

Our bailiffs spent 413 hours serving documents as required by law. They drove 6,321 miles in 2022.

Security Log Retention Data 2022:

All persons entering the building are subject to security screening. No items had to be confiscated from persons entering the building in 2022.

Conclusion

This Annual Report was prepared by Judge Nanette DeGarmo Von Allman and Court Administrator Judith Dzigiel. Probation information was prepared by Chief Probation Officer Leslie Miller. Security/Bailiff information was prepared by Chief Bailiff Matt Henry. The balance sheet and case statistical information were prepared by Clerk Julie Stamets and Bookkeeper Michele Green. This Report was printed and assembled in-house.

Appendix

Balance Sheet

New Philadelphia Municipal Court---Traffic and Criminal---2022 Receipts and Disbursements	
Receipts:	
Traffic and Criminal Fines	\$235,359.11
Total sent in by Villages for Law Library Amount/Not deducted from Fines collected	\$151.80
Traffic & Criminal Court Costs	\$187,305.95
Computer Improvements	\$28,696.70
Legal Research	\$14,911.64
Special Projects	\$304,503.37
Jury & Witness Fees	\$1,106.10
Probation Fees	\$161,219.97
Warrant Return,Jail,Video,Personal Service, & Expungement Fees	\$4,256.33
Domestic Violence	\$4,812.90
Cilocs Fund #254	\$105,227.30
Victims of Crime	\$43,642.92
General Revenue	\$1,287.93
OVI'S	\$4,461.50
Sheriff Fees	\$1,302.13
Bureau of Motor Vehicles	\$0.00
Dispute Resolution	\$21,659.82
Personal Service-Not Tuscarawas County	\$0.00
Public Defender Fund	\$11,917.59
Bailiff Fees	\$9,004.12
Drug Law Enforcement/Justice Program Services	\$15,081.55
Indigent Drivers Interlock & Alcohol Fund	\$134,706.88
Indigent Defense Support Fund	\$7,232.87
Indigent Alcohol Treatment Fund	\$6,462.15
Criminal Diversion Program	\$2,098.10
Capital Recovery Fees Collected (New in Nov 12)	\$4,170.33
Payment Plan Fee (New in 2012)	\$10,376.19
Tuscarawas County Contribution in Lieu of Community Service	\$26,442.48
Total Receipts	\$1,347,397.73
Bonds & Transfer Receipts	
Disbursements:	
City Of New Philadelphia-Fines	\$9,539.00
I.D.A.T.E.	\$4,212.76
NPPD OVI Fines	\$553.00
OSP (45%)	\$44,193.86
Local Costs	\$187,305.95
Legal Research	\$14,911.64
Special Projects	\$304,503.37
Computer Improvements	\$28,696.70
Jury & Witness Fees	\$66.00
Probation Fees	\$161,219.97
Domestic Violence Fees	\$4,812.90
Expungements	\$260.00
Dispute Resolution	\$21,659.82
Bailiff Fees	\$5,402.48
Jail Fees, Warrant Returns,Parking & Video Fees	\$1,201.88
Indigent Drivers Interlock & Alcohol Fund	\$7,232.87
IATC	\$6,462.15
Criminal Diversion Program	\$2,098.10
Payment Plan Fee (Began in 2012)	\$10,376.19
Cilocs Fund #254	\$105,227.30
SUB-TOTAL	\$919,935.94
Tuscarawas County	
Fines	\$57,310.34
OSP Fine Money (10%)	\$11,011.35
Sheriff Fees	\$1,302.13
Costs:M.W.C.D.,Dog Warden	\$2,195.19
Sheriff OVI's	\$198.00
Sheriff Housing	\$9,966.83
Liquor Fines	\$348.61
Tusc Co. Misc, Warrant Ret & Personal Service	\$1,625.55
Jury & Witness Fees	\$1,040.10
Expungements	\$180.00
Bailiff Fees	\$3,601.64
Contribution In Lieu of Community Service	\$26,442.48
SUB TOTAL	\$115,222.22
DISBURSEMENT SUB-TOTAL	

Page 2---2022 New Philadelphia Municipal Court-Traffic/Criminal Receipts & Disbursements							
STATE OF OHIO DISBURSEMENTS							
	Victims of Crime						\$43,642.92
	General Revenue						\$1,287.93
	State OSP Fines (45%)						\$54,909.21
	Liquor Fines (50%)						\$348.60
	Expungements						\$810.00
	Child Safety/Hwy Safety						\$682.00
	Seatbelt Fines						\$13,519.96
	OSP OVI'S						\$2,992.50
	Bureau of Motor Vehicles						\$0.00
	Warrant Return Fees						\$39.00
	Indigent Defense Support Fund						\$12,766.88
	Indigent Support Defense (IDFC)						\$121,940.00
	Drug Law Enforcement/Justice Program Services						\$15,081.55
	SUB TOTAL						\$268,020.55
	Ohio Board of Pharmacy Fines						\$3,687.88
	Capital Recovery Systems Inc Collection Fees (New in 2012)						\$4,170.33
	Other Cities & Villages						
	Village of Baltic - Fines/Costs						\$0.00
	Village of Barnhill - Fines/Costs						\$0.00
	Village of Bolivar - Fines/Costs						\$153.00
	City of Dover - Fines/Costs						\$9,054.12
	Village of Midvale - Fines/Costs						\$171.65
	Village of Mineral City - Fines/Costs						\$0.00
	Village of Roswell - Fines/Costs						\$0.00
	Village of Stonecreek - Fines/Costs						\$0.00
	Village of Strasburg - Fines/Costs						\$7,177.45
	Village of Sugarcreek - Fines/Costs						\$320.00
	Village of Zoar - Fines/Costs						\$150.00
	Cities & Villages Sub-Total						\$17,026.22
	Service by Agencies out of Tuscarawas County						\$0.00
	Ohio Dept of Natural Resources						\$1,917.00
	Public Defender Fund						\$11,917.59
	Tuscarawas County Law Library						\$5,500.00
	<i>The Village's of Bolivar, Roswell & Mineral City sent in a check for their percentage owed for the Law Library. This money was sent, instead of deducting from fines collected, making the total sent to the Law Library \$5500.00.</i>						
	SUB TOTAL						\$19,334.59
	Total Disbursements from page 1 & 2						\$1,347,397.73
	Bonds/Overpayments Received						\$72,545.25
	Bonds/Overpayments Disbursed						\$55,228.09
	Net Receipts over Disbursements(Bonds)						\$17,317.16
	Balance on Hand, December 31st 2021						\$118,108.19
	Balance on Hand, December 31st 2022						\$131,067.02

BALANCE ON HAND JANUARY 2022	JAN	FEB	MARCH	APRIL	MAY	JUNE	JULY	AUGUST	SEPT	OCT	NOV	DEC	TOTALS
NEW PHILA DISBURSEMENTS													
Traffic/Criminal Fines	\$0.00	\$0.00	\$322.16	\$1,553.95	\$959.35	\$745.39	\$922.30	\$1,222.94	\$1,604.63	\$1,030.53	\$518.00	\$659.75	\$9,539.00
Local Costs	\$11,291.08	\$16,932.24	\$21,780.25	\$21,837.37	\$17,426.32	\$15,148.17	\$13,897.29	\$14,112.60	\$14,918.50	\$14,140.47	\$13,704.85	\$12,116.81	\$187,305.95
Legal Research	\$900.50	\$1,215.95	\$1,777.00	\$1,624.40	\$1,316.28	\$1,350.01	\$1,188.00	\$1,063.00	\$1,301.50	\$1,192.00	\$1,049.00	\$934.00	\$14,911.64
Special Projects	\$18,174.10	\$26,018.95	\$34,711.55	\$32,826.02	\$27,719.44	\$25,986.45	\$23,418.10	\$21,276.21	\$26,439.34	\$24,515.20	\$23,455.69	\$19,982.32	\$304,503.37
Computer Improvements	\$1,651.00	\$2,347.30	\$3,331.81	\$3,178.07	\$2,721.52	\$2,534.00	\$2,184.00	\$1,922.00	\$2,399.00	\$2,085.00	\$2,478.00	\$1,865.00	\$28,696.70
Dispute Resolution	\$1,272.00	\$1,767.41	\$2,522.20	\$2,349.73	\$1,954.90	\$1,899.68	\$1,719.80	\$1,523.30	\$1,871.80	\$1,655.00	\$1,752.00	\$1,372.00	\$21,659.82
Jury Fees	\$0.00	\$0.00	\$0.00	\$0.00	\$0.00	\$0.00	\$0.00	\$0.00	\$0.00	\$0.00	\$0.00	\$0.00	\$0.00
Witness Fees	\$0.00	\$0.00	\$0.00	\$24.00	\$0.00	\$6.00	\$0.00	\$30.00	\$0.00	\$6.00	\$0.00	\$0.00	\$66.00
Probation Fees	\$11,756.45	\$17,477.58	\$20,741.33	\$22,979.40	\$12,814.63	\$11,561.98	\$12,125.83	\$10,659.33	\$12,609.04	\$10,071.52	\$6,475.11	\$11,947.77	\$161,219.97
Cilcoes Fund #254	\$5,716.55	\$7,181.82	\$7,519.67	\$7,938.20	\$7,608.95	\$8,587.99	\$7,906.93	\$13,249.47	\$10,726.94	\$9,192.85	\$8,864.79	\$10,733.14	\$105,227.30
Domestic Violence Fees	\$529.00	\$551.77	\$517.00	\$399.10	\$219.03	\$571.00	\$109.00	\$162.25	\$599.47	\$436.00	\$467.75	\$251.53	\$4,812.90
New Phila I.D.A.T.E.	\$310.00	\$363.80	\$325.20	\$598.46	\$385.30	\$263.00	\$335.00	\$262.00	\$400.00	\$435.00	\$150.00	\$385.00	\$4,212.76
New Phila OSP Fines 45%	\$2,252.36	\$3,800.14	\$5,918.15	\$4,599.70	\$4,153.31	\$5,089.59	\$3,921.22	\$2,777.26	\$3,454.68	\$2,776.80	\$2,595.35	\$2,855.30	\$44,193.86
Expungements (\$20.00)	\$40.00	\$0.00	\$60.00	\$40.00	\$0.00	\$20.00	\$0.00	\$0.00	\$0.00	\$40.00	\$40.00	\$0.00	\$260.00
OVI Costs	\$60.00	\$73.00	\$0.00	\$60.00	\$50.00	\$0.00	\$50.00	\$25.00	\$75.00	\$85.00	\$25.00	\$50.00	\$553.00
Bailiff Fees	\$394.20	\$649.29	\$717.43	\$678.40	\$464.70	\$195.60	\$318.24	\$396.00	\$427.20	\$485.10	\$316.80	\$359.52	\$5,402.48
IDIF	\$300.00	\$800.00	\$707.22	\$1,050.00	\$625.00	\$500.00	\$628.70	\$375.00	\$804.15	\$598.00	\$244.80	\$800.00	\$7,232.87
Indigent Alcohol Treatment Fund	\$375.00	\$508.10	\$783.00	\$671.65	\$576.90	\$580.50	\$531.00	\$442.50	\$592.50	\$535.50	\$459.50	\$406.50	\$6,462.15
New Phila Misc:Jail Fees, Wret, Video fees & Parking Fines	\$139.35	\$261.71	\$146.71	\$326.50	\$77.31	\$97.30	\$55.00	\$30.00	\$18.00	\$0.00	\$0.00	\$50.00	\$1,201.88
CRIMINAL DIVERSION PROGRAM	\$0.00	\$98.10	\$200.00	\$200.00	\$200.00	\$200.00	\$200.00	\$0.00	\$200.00	\$400.00	\$200.00	\$200.00	\$2,098.10
2012 Payment Plan Fee (\$25)	\$638.00	\$1,752.52	\$1,232.90	\$1,858.52	\$1,090.60	\$545.35	\$541.50	\$720.30	\$273.90	\$658.00	\$603.87	\$460.73	\$10,376.19
NEW PHILADELPHIA TOTALS NOV 12	\$55,799.59	\$81,799.68	\$103,313.58	\$104,793.47	\$80,363.54	\$75,862.01	\$70,051.91	\$70,249.16	\$78,515.65	\$70,337.97	\$63,400.01	\$65,449.37	\$919,935.94
CAPITAL RECOVERY FEES NOV 12	\$269.50	\$745.30	\$144.50	\$689.51	\$336.70	\$110.90	\$374.70	\$546.42	\$391.70	\$188.30	\$190.60	\$182.20	\$4,170.33
STATE OF OHIO TOTALS	\$2,559.00	\$3,570.32	\$5,341.89	\$4,622.76	\$3,835.56	\$3,945.19	\$3,478.90	\$2,997.72	\$3,919.78	\$3,518.00	\$3,090.00	\$2,763.80	\$43,642.92
Victims of Crime	\$33.00	\$275.91	\$284.09	\$274.73	\$108.00	\$97.00	\$96.20	\$26.00	\$30.00	\$0.00	\$11.00	\$52.00	\$1,287.93
General Revenue	\$2,815.45	\$4,726.22	\$7,371.97	\$5,749.65	\$5,191.08	\$6,080.74	\$4,900.41	\$3,471.58	\$4,318.36	\$3,471.00	\$3,243.63	\$3,569.12	\$54,909.21
State OSP Fines 45%	\$8.50	\$67.00	\$75.00	\$33.50	\$0.00	\$14.10	\$33.50	\$8.50	\$58.50	\$0.00	\$50.00	\$0.00	\$348.60
Liquor Fines (50%)	\$150.00	\$30.00	\$150.00	\$60.00	\$0.00	\$60.00	\$0.00	\$0.00	\$60.00	\$180.00	\$60.00	\$60.00	\$810.00
Expungements (\$30.00)	\$0.00	\$17.00	\$62.00	\$37.00	\$37.00	\$37.00	\$111.00	\$37.00	\$111.00	\$134.00	\$99.00	\$0.00	\$682.00
Child Safety/Hwy Safety	\$572.00	\$1,068.00	\$1,152.96	\$1,190.80	\$1,730.00	\$1,040.00	\$605.00	\$755.00	\$790.00	\$717.00	\$2,505.00	\$1,394.20	\$13,519.96
Seat Belt Fines	\$100.00	\$235.00	\$186.00	\$419.50	\$455.00	\$185.00	\$223.00	\$235.00	\$235.00	\$241.00	\$100.00	\$380.00	\$2,992.50
OSP OVIS	\$0.00	\$0.00	\$0.00	\$0.00	\$0.00	\$0.00	\$0.00	\$0.00	\$0.00	\$0.00	\$0.00	\$0.00	\$0.00
Bureau of Motor Vehicles	\$0.00	\$0.00	\$0.00	\$0.00	\$0.00	\$0.00	\$39.00	\$0.00	\$0.00	\$0.00	\$0.00	\$0.00	\$39.00
OSP Warrant Return	\$660.00	\$1,299.50	\$1,231.46	\$1,640.22	\$1,423.85	\$715.85	\$1,049.00	\$693.00	\$1,157.00	\$1,126.00	\$405.00	\$1,366.00	\$12,766.88
Indigent Defense Support (idsf)	\$200.00	\$50.00	\$75.00	\$150.00	\$100.00	\$100.00	\$50.00	\$225.00	\$0.00	\$150.00	\$75.00	\$75.00	\$1,250.00
Bail Bond Surcharge	\$7,214.80	\$9,580.77	\$14,299.95	\$12,321.58	\$10,808.25	\$10,857.51	\$9,650.44	\$8,447.70	\$10,767.82	\$9,738.18	\$9,196.90	\$7,806.10	\$120,690.00
Indigent Support Defense (idsf)	\$876.20	\$1,188.15	\$1,826.90	\$1,568.30	\$1,343.10	\$1,354.50	\$1,239.00	\$1,028.50	\$1,382.40	\$1,251.60	\$1,074.30	\$948.60	\$15,081.55
Drug Law Enforce/Justice Program	\$15,188.95	\$22,107.87	\$32,057.22	\$28,068.04	\$25,029.84	\$24,486.89	\$21,475.45	\$17,925.00	\$22,829.86	\$20,526.78	\$19,909.83	\$18,414.82	\$268,020.55

Traffic/Criminal Receipts Cont'd	JAN	FEB	MARCH	APRIL	MAY	JUNE	JULY	AUG	SEPT	OCT	NOV	DEC	TOTALS
TUSCARAWAS COUNTY RECEIPTS													
FINES	\$3,558.23	\$5,687.01	\$5,655.78	\$8,846.11	\$4,703.05	\$4,184.22	\$4,037.50	\$5,214.00	\$5,006.36	\$3,783.30	\$3,189.30	\$3,445.48	\$57,310.34
OSP FINE MONEY (10%)	\$563.09	\$947.36	\$1,476.64	\$1,149.91	\$1,038.26	\$1,241.14	\$980.17	\$694.31	\$863.67	\$694.20	\$648.78	\$713.82	\$11,911.35
LIQUOR FINE MONEY (50%)	\$8.50	\$67.00	\$75.00	\$33.50	\$0.00	\$14.11	\$33.50	\$8.50	\$58.50	\$0.00	\$50.00	\$0.00	\$348.61
SHERIFF HOUSING	\$659.00	\$952.80	\$745.00	\$1,114.16	\$1,122.20	\$606.50	\$846.07	\$999.00	\$672.00	\$908.10	\$500.00	\$842.00	\$9,966.83
SHERIFF FEES	\$76.00	\$120.00	\$184.00	\$152.00	\$96.00	\$116.00	\$116.00	\$100.13	\$98.00	\$106.00	\$66.00	\$72.00	\$1,302.13
SHERIFF OVI'S	\$0.00	\$0.00	\$0.00	\$25.00	\$25.00	\$0.00	\$0.00	\$0.00	\$32.00	\$50.00	\$50.00	\$16.00	\$198.00
DOG WARDEN	\$27.00	\$127.00	\$0.00	\$54.00	\$258.00	\$108.00	\$27.00	\$54.00	\$0.00	\$81.00	\$54.00	\$27.00	\$817.00
M.W.C.D.	\$0.00	\$0.00	\$0.00	\$0.00	\$0.00	\$400.00	\$359.00	\$134.00	\$50.00	\$100.00	\$192.00	\$143.19	\$1,378.19
Expurgements	40.00	0.00	40.00	0.00	0.00	20.00	0.00	0.00	40.00	20.00	0.00	20.00	180.00
Tusc County Misc Wret, Serv Etc	\$11.00	\$95.00	\$57.00	\$185.00	\$47.70	\$0.00	\$81.00	\$1,074.25	\$0.00	\$64.60	\$0.00	\$10.00	\$1,625.55
Witness Fees Collected	\$50.90	\$101.80	\$84.00	\$161.51	\$102.50	\$61.99	\$18.00	\$30.00	\$30.00	\$24.00	\$36.00	\$36.00	\$736.70
Jury Fees Collected	\$0.00	\$303.40	\$0.00	\$0.00	\$0.00	\$0.00	\$0.00	\$0.00	\$0.00	\$0.00	\$0.00	\$0.00	\$303.40
Bailiff Fees	\$262.80	\$432.86	\$478.28	\$452.26	\$309.80	\$130.40	\$212.16	\$264.00	\$284.80	\$323.40	\$211.20	\$239.68	\$3,601.64
Law Library	\$1,105.08	\$2,126.42	\$2,012.60	\$255.90	\$0.00	\$0.00	\$0.00	\$0.00	\$0.00	\$0.00	\$0.00	\$0.00	\$5,500.00
Contribution in Lieu of Comm Serv	\$1,280.45	\$1,608.66	\$1,684.33	\$2,046.96	\$1,962.05	\$2,214.51	\$2,038.90	\$3,416.53	\$2,766.06	\$2,370.48	\$2,285.89	\$2,767.66	\$26,442.48
PUBLIC DEFENDER FEE	\$500.00	\$1,555.20	\$1,581.17	\$1,784.91	\$1,096.46	\$650.80	\$847.27	\$917.00	\$700.00	\$839.41	\$734.00	\$711.37	\$11,917.59
Tuscarawas County Totals 2022	\$8,142.05	\$14,124.51	\$14,073.80	\$16,261.22	\$10,761.02	\$9,747.67	\$9,596.57	\$12,905.72	\$10,601.39	\$9,364.49	\$8,017.17	\$9,044.20	\$132,639.81
Misc Personal Service-Not Tusc Co	\$0.00	\$0.00	\$0.00	\$0.00	\$0.00	\$0.00	\$0.00	\$0.00	\$0.00	\$0.00	\$0.00	\$0.00	\$0.00
Ohio Dept of Natural Resources	\$100.00	\$0.00	\$150.00	\$400.00	\$100.00	\$200.00	\$150.00	\$0.00	\$100.00	\$200.00	\$117.00	\$400.00	\$1,917.00
Ohio Dept. Of Nat. Res. Expunge	\$0.00	\$0.00	\$0.00	\$0.00	\$0.00	\$0.00	\$0.00	\$0.00	\$0.00	\$0.00	\$0.00	\$0.00	\$0.00
Ohio Board of Pharmacy	\$145.00	\$495.91	\$503.56	\$499.70	\$592.93	\$430.16	\$312.92	\$100.00	\$0.00	\$206.40	\$351.30	\$50.00	\$3,687.88
Other Cities and Villages													
Village of Baltic	\$0.00	\$0.00	\$0.00	\$0.00	\$0.00	\$0.00	\$0.00	\$0.00	\$0.00	\$0.00	\$0.00	\$0.00	\$0.00
Village of Barnhill	\$0.00	\$0.00	\$0.00	\$0.00	\$0.00	\$0.00	\$0.00	\$0.00	\$0.00	\$0.00	\$0.00	\$0.00	\$0.00
Village of Bolivar	\$0.00	\$25.00	\$0.00	\$17.00	\$0.00	\$0.00	\$17.00	\$35.00	\$17.00	\$42.00	\$0.00	\$0.00	\$153.00
City of Dover	\$55.00	\$45.00	\$711.91	\$739.95	\$1,231.95	\$726.00	\$554.00	\$907.97	\$666.00	\$897.00	\$1,068.50	\$1,460.84	\$9,054.12
Village of Midvale	\$0.00	\$0.00	\$0.00	\$129.65	\$0.00	\$0.00	\$0.00	\$0.00	\$17.00	\$0.00	\$0.00	\$25.00	\$171.65
Village of Mineral City	\$0.00	\$0.00	\$0.00	\$0.00	\$0.00	\$0.00	\$0.00	\$0.00	\$0.00	\$0.00	\$0.00	\$0.00	\$0.00
Village of Roswell	\$0.00	\$0.00	\$0.00	\$0.00	\$0.00	\$0.00	\$0.00	\$0.00	\$0.00	\$0.00	\$0.00	\$0.00	\$0.00
Village of Stonecreek	\$0.00	\$0.00	\$0.00	\$0.00	\$0.00	\$0.00	\$0.00	\$0.00	\$0.00	\$0.00	\$0.00	\$0.00	\$0.00
Village of Strasburg	\$35.00	\$2.00	\$23.00	\$258.45	\$1,081.00	\$743.00	\$1,285.00	\$798.00	\$1,152.00	\$712.00	\$424.00	\$664.00	\$7,177.45
Village of Sugarcreek	\$0.00	\$0.00	\$25.00	\$0.00	\$0.00	\$150.00	\$0.00	\$0.00	\$0.00	\$45.00	\$0.00	\$100.00	\$320.00
Village of Zoar	\$0.00	\$0.00	\$0.00	\$150.00	\$0.00	\$0.00	\$0.00	\$0.00	\$0.00	\$0.00	\$0.00	\$0.00	\$150.00
2022 VILLAGE TOTALS	\$90.00	\$72.00	\$759.91	\$1,295.05	\$2,312.95	\$1,619.00	\$1,856.00	\$1,740.97	\$1,842.00	\$1,696.00	\$1,492.50	\$2,248.84	\$17,026.22
MONTHLY GRAND TOTALS 2022	\$79,735.09	\$119,345.27	\$151,002.57	\$152,006.99	\$119,496.98	\$112,456.63	\$103,817.55	\$103,467.27	\$114,280.60	\$102,519.94	\$93,478.41	\$95,790.43	\$1,347,397.73
2022 Bonds Received	\$9,189.00	\$17,064.10	\$8,537.90	\$2,538.24	\$4,870.95	\$1,810.50	\$697.65	\$3,374.00	\$3,229.00	\$4,337.91	\$6,490.00	\$1,406.00	\$72,545.25
2022 Bonds Disbursed	\$5,065.84	\$16,082.10	\$894.90	\$3,269.10	\$3,100.95	\$7,075.50	\$1,990.40	\$6,185.39	\$1,707.00	\$2,911.00	\$3,883.91	\$3,072.00	\$55,228.09

		Civil/Small Claims Division			
		New Philadelphia Municipal Court			
		2022 Receipts and Disbursements			
Receipts					
	Court Costs				39,174.61
	Computer Improvements				10,288.00
	Legal Research				2,010.00
	Legal Aid 1%				263.82
	Special Projects				68,068.00
	State Legal Aid				15,624.18
	Dispute Resolution				4,136.00
	Bailiff Fees				2,820.00
	Personal Service				567.88
	Judgments				355,920.07
	Publication Fees				390.26
	Garnishment 2% Fee (sent to city in local cost)				7,052.15
Total					<u>\$506,314.97</u>
Disbursements					
New Philadelphia - Court Costs					\$39,174.61
	Special Projects				\$68,068.00
	Computer Improvements				\$10,288.00
	Legal Research				\$2,010.00
	Legal Aid 1%				\$263.82
	Dispute Resolution				\$4,136.00
	Bailiff Fees 60%				\$1,692.00
	Personal Service				\$567.88
	Garnishment 2% Fee (sent to city in local cost)				\$7,052.15
Tuscarawas County					
	Bailiff Fees 40%				\$1,128.00
State of Ohio					
	Legal Aid				\$15,624.18
SUB TOTAL					<u>\$150,004.64</u>
Publication Fees					<u>\$390.26</u>
Judgments					\$355,920.07
TOTAL					<u>\$506,314.97</u>
Security For Costs (Bonds)					
	Received				\$8,642.25
	Paid Out				\$2,096.25
	Total Received less Disbursed				(\$1,268.00)

CIVIL/SMALL CLAIMS 2022

Receipts	Jan	Feb	March	April	May	June	July	August	Sept	October	November	December	Totals
Court Costs	\$3,335.96	\$2,836.11	\$4,124.71	\$2,852.41	\$2,834.71	\$3,076.91	\$2,864.46	\$4,693.46	\$3,302.21	\$3,622.21	\$2,560.96	\$3,070.50	\$39,174.61
Computer Improvements	\$960.00	\$740.00	\$1,090.00	\$698.00	\$750.00	\$750.00	\$740.00	\$1,250.00	\$860.00	\$990.00	\$680.00	\$780.00	\$10,288.00
Legal Research	\$156.00	\$138.00	\$243.00	\$150.00	\$156.00	\$150.00	\$147.00	\$246.00	\$162.00	\$198.00	\$117.00	\$147.00	\$2,010.00
Legal Aid 1%	\$117.76	\$10.61	\$19.11	\$11.84	\$12.32	\$11.65	\$12.14	\$19.07	\$12.69	\$15.66	\$9.43	\$11.54	\$263.82
Special Projects	\$5,956.50	\$4,599.00	\$7,177.00	\$4,857.00	\$4,946.50	\$5,041.00	\$4,996.50	\$8,566.50	\$5,789.00	\$6,474.00	\$4,354.50	\$5,320.50	\$68,068.00
Dispute Resolution	\$352.00	\$280.00	\$488.00	\$308.00	\$312.00	\$316.00	\$288.00	\$500.00	\$344.00	\$384.00	\$260.00	\$324.00	\$4,136.00
Garnishment 2% Fee	\$430.98	\$546.22	\$567.69	\$729.37	\$640.40	\$540.66	\$683.39	\$649.40	\$557.47	\$518.81	\$626.16	\$561.60	\$7,052.15
Bailiff Fees 60%	\$120.00	\$36.00	\$210.00	\$276.00	\$144.00	\$120.00	\$132.00	\$108.00	\$156.00	\$216.00	\$12.00	\$162.00	\$1,692.00
Return Check Fee	\$0.00	\$0.00	\$0.00	\$0.00	\$0.00	\$0.00	\$0.00	\$0.00	\$0.00	\$0.00	\$0.00	\$0.00	\$0.00
State Legal Aid	\$1,164.24	\$1,050.39	\$1,891.89	\$1,172.16	\$1,219.68	\$1,153.35	\$1,201.86	\$1,887.93	\$1,256.31	\$1,550.34	\$933.57	\$1,142.46	\$15,624.18
Personal Service	\$0.00	\$0.00	\$0.00	\$0.00	\$104.90	\$134.91	\$0.00	\$142.25	\$63.00	\$79.82	\$32.00	\$11.00	\$567.88
Tusc Co Bailiff Fees 40%	\$80.00	\$24.00	\$140.00	\$184.00	\$96.00	\$80.00	\$88.00	\$72.00	\$104.00	\$144.00	\$8.00	\$108.00	\$1,128.00
Publication Fee	\$0.00	\$0.00	\$193.26	\$0.00	\$0.00	\$0.00	\$0.00	\$0.00	\$0.00	\$197.00	\$0.00	\$0.00	\$390.26
Government Receipts	\$12,673.44	\$10,250.33	\$16,124.66	\$11,238.78	\$11,216.51	\$11,374.48	\$11,153.35	\$18,134.61	\$12,606.68	\$14,389.84	\$9,593.62	\$11,638.60	\$150,394.90
Bonds Received	\$0.00	\$116.00	\$228.26	\$98.64	\$36.26	\$180.91	\$20.00	\$4,679.36	\$1,209.00	\$1,733.82	\$258.00	\$82.00	\$8,642.25
Bonds Disbursed	\$0.00	\$110.00	\$219.26	\$0.00	\$127.90	\$176.91	\$0.00	\$2,610.36	\$1,178.00	\$1,332.82	\$248.00	(\$3,907.00)	\$2,096.25
Total Received less Disb	\$0.00	\$6.00	\$9.00	\$98.64	(\$91.64)	\$4.00	\$20.00	\$2,069.00	\$31.00	\$401.00	\$10.00	(\$3,825.00)	(\$1,268.00)
Garnis	\$0.00	\$110.00	\$14.00	\$0.00	\$3.00	\$42.00	\$0.00	\$2,466.11	\$1,115.00	\$1,056.00	\$216.00	\$3,771.00	\$8,793.11
Judgments	\$21,616.95	\$27,159.49	\$28,498.75	\$36,211.93	\$32,494.88	\$27,188.31	\$34,175.69	\$33,058.93	\$28,377.26	\$26,176.37	\$31,319.20	\$29,642.31	\$355,920.07